



ONE COMMUNITY

Standing Strong



732-777-1940
office@jfsmiddlesex.org
jfsmiddlesex
www.jfsmiddlesex.org

JFS of Middlesex County

2022 Journal

We're proud to be recognized for our award-winning care.



From newborns to seniors, Saint Peter's University Hospital has been providing the highest level of quality patient care for more than 115 years. We are proud to be recognized as leaders in maternity, pediatrics, women's health, diabetes, cancer care, and stroke, to name a few. With nationally-renowned physicians and award-winning nurses, you couldn't be in better hands.

To learn more about the award-winning care at Saint Peter's University Hospital, call 732.745.8600 or visit saintpetershcs.com



Sponsored by the Roman Catholic Diocese of Metuchen • State-designated children's hospital and regional perinatal center
Major clinical affiliate of Rutgers Biomedical and Health Sciences • Affiliate of The Children's Hospital of Philadelphia
Saint Peter's University Hospital is certified in Perinatal Care and as a Primary Stroke Center by The Joint Commission
U.S. News and World Report rates Saint Peter's as a High Performing Hospital for Lung Cancer Surgery, COPD, Heart Failure, and Kidney Disease

Dear Friends,

I am pleased to report to you, of the many accomplishments and successes, of Jewish Family Services, of Middlesex County. We have successfully relocated our Milltown office to a wonderful new location in North Brunswick. The new space has greatly improved our ability to carry out agency programs and activities. We have continued to cope with the Covid epidemic. Programs and services have continued to be provided; while keeping our clients, staff, and volunteers safe. Indeed, we have expanded our efforts regarding providing Kosher Meals on Wheels, and the food pantry. Counseling services have also increased. All the agency's critical services which impact on the people most in need in our community have been in service.

Of course, none of this would be possible without the extraordinary work of our hardworking staff, incredibly dedicated volunteers, and diligent Board of Trustee members as well as the ongoing support of the community.

I look forward to JFS continuing to provide innovative, and exemplary programs to the people we serve.

Stay safe and well

A handwritten signature in blue ink, reading "Jeffrey E. Einbond".

Jeffrey E. Einbond

President Board of Trustees



Dear JFS Friends and Family:

Thank you for your support, especially now during these challenging times. We have been so fortunate to have the help of loyal and new friends in serving so many people in need, more and more each week as prices soar, jobs end and businesses close.

The past year has brought record numbers of families to JFS. In the first six months of this year, JFS programs have served:

- Holocaust Survivor Services: 190 survivors
- Kosher Meals on Wheels: 18,000 meals
- Immigration and Citizenship: 456 individuals
- Kosher Food Pantries: 2,745 bags of food
- Counseling: 2,297 sessions

Thanks to our staff and volunteers, we are quickly responding to the ever-growing requests for food, mental health counseling, employment and immigration services, kosher meals on wheels, and more. Seniors and Holocaust survivors continue to receive meals and weekly wellness checks while women working with the JFS Women's Center find the help they need to become self-sufficient after the loss of a partner. Immigrant families are reunited and new citizens are able to realize their American dream.

Your support keeps us going – your contribution feeds, educates, counsels, and empowers families. At JFS, 95% of all revenue goes directly to our programs. We are honored to have your support so that we may continue to serve our community with strength, dignity and compassion.

We are sincerely grateful to count you as part of our JFS family. We wish you and your loved ones good health and happiness – see you at next year's Gala!



Roni Salkin

Executive Director



JFS Middlesex is proud to serve our community.



Career Center

Immigration & Citizenship

Counseling Services

Senior Services

Food Pantry and Seasonal

Women's Center



732.777.1940

www.jfsmiddlesex.org

219C Blackhorse Lane, North Brunswick, NJ 08902
1600 Perrineville, Suite 52, Monroe Township, NJ 08831



GOLD SPONSORS

The Gardens at Monroe
Anonymous

SILVER SPONSORS

EMKA
St. Peter's Healthcare System

TOPAZ SPONSORS

Abilene, Inc.

OPAL SPONSORS

Charles and Ellen Clarkson
Jeffrey and Patricia Einbond
Carol and Jack Goldberg
Dr. and Mrs. Murray Katz
Nice Jewish Girls



PEARL SPONSORS

Liliana Dos Santos, Investors Bank
Parker Health Group, Inc.
Connie Pizzaro, Oasis Senior Advisors
Roni and Jeff Salkin
Jerrold G. Trub
Zimmerman Financial Group, Inc.

GRAND SPONSOR

Barbara and Dov Pollak

PROGRAM SPONSORS

The Oscar and Ella Wilf Campus For Senior Living
Salit Auto

CONTRIBUTING SPONSORS

Anonymous
Judy Cavaliere
Andrew Cerame, Do Not Throw It Away
Crabiel Funeral Home
John and Jean Lembo
MoneyCare Financial, LLC / Bernie Sokal
Netcentric-IT
The Orchid Glatt Kosher Restaurant
Salit Auto
Subaru



JFS Middlesex

Executive Board

Jeffrey Einbond, President

Jack Goldberg, Immediate Past President/VP Fund Development

Murray Katz, Past President, VP Strategic Planning

Vickie Solomon, President Emeritus

Sol Heckelman, VP Professional Services

Bernie Sokal, VP Board Development

Naomi Trachtenberg, Recording Secretary

Jerrold Trub, Treasurer

Trustees

Vivian Beenstock

Michael Bernstein

Christine D'Agostino

Vince Davis

Liliana Dos Santos

Jason Fruhschein

Sara Levine

Michael Menaker

Shanti Narra

Connie Pizarro

David Rabinowitz

Shana Siegel



JFS Middlesex

Meet Our Team

Roni Salkin, Executive Director

William Stover, *Associate Executive, Director/Director of Clinical Services*

Ira Marks, *Controller*

Lisa Mason, *Executive Administrator/Grants Monitor*

Charles Clarkson, *Director of Senior Medicare Patrol NJ*

Debby Alter, *Director of Immigration Services*

Michelle Beley-Bianco, *Director of Volunteer Services*

Judith Cavaliere, *Director of Business Development*

Alan Lubins
Transportation

Helen Feldman, Ph.D.
Staff Therapist

Miriam Plumer, MSW
Staff Therapist

Alicia Lax, LCSW
Staff Therapist

Joel Schneider
SMP Outreach Specialist

Nora Bergman
Intake Worker/
Administrative Assistant

America Zuniga
Intake Worker/
Administrative Assistant

John Tello
Citizenship Program Coordinator

Sara Ullman
Kosher Meals on Wheels
Coordinator

Cynthia F. Csillag-Cornick, LCSW
Staff Therapist

Judy Rogers, LCSW
Staff Therapist

Stacey Lampert, LCSW
Staff Therapist

Diane Markowitz
Career Development Specialist

Julie Rodriguez
Case Manager, Immigration &
Refugee Services/Media &
Outreach

Stanford Mironov
Transportation

Evie Hill
Administrative Assistant

Karen Blewitt
Bookkeeper

Veronica Sheehan, LCSW
Staff Therapist

Fay Ross, MSW
Holocaust Survivors Services
Coordinator

Laurie Boehm, LCSW
Senior Services Coordinator

Yash Monga
KMOW Monroe
Dispatcher & Medical
Biller

Francine Elkin
Intake Worker/
Administrative Assistant

Lisa Balewitz
Women's Center Coordinator

Harlan Tuckman
Transportation

Michele Livow, LCSW
Staff Therapist



RELIABLE AS THE SUN™

WWW.ABILENEINC.COM

PHONE: 718.372.4210 • FAX: 718.372.0255

JEFF SOLOMON, PRESIDENT

Congratulations to
Jewish Family Services
and its staff for all their
great work throughout
the community.

ELLEN AND CHARLES
CLARKSON

Congratulations to JFS for another extraordinary year!

You continue to provide
incredibly important work for
the people we serve.

On behalf of myself and the
Board of Trustees,
thank you for the great work
you do each and every day.

Warmest Regards,
JEFFREY EINBOND
PRESIDENT
JFS BOARD OF TRUSTEES

Best wishes to
Jewish Family Services
Keep up your great
work.

LIZ AND MURRAY KATZ

A decorative graphic consisting of two overlapping circles. The larger circle is light gray, and the smaller circle is light blue. A diagonal hatched pattern is overlaid on the circles.



NICE JEWISH GIRLS HOUSECLEANING And Companion Service

Eileen Lorner
Owner

eileennjg8@gmail.com

Serving Middlesex County

Bonded and Insured

609-860-9050

Carol and Jack Goldberg
take great pleasure in
congratulating the
hardworking staff of
Jewish Family Services on
successfully navigating
through these very
turbulent times.

May your good work
continue as we help our
community to thrive.



We are proud to support
Jewish Family Services of
Middlesex County.



investorsBank

Banking in *your* best interest.

East Brunswick Branch
645 Route 18, East Brunswick, NJ 08816
Liliana Dos Santos , Branch Manager
732.613.5710 • investorsbank.com

Member FDIC
Equal Housing Lender



ZIMMERMAN FINANCIAL GROUP INC.

Providing Financial Security

Phone: 732-398-0050

Phone: 609-752-3033

Mobile: 732-770-0554

2 Research Way 1st Floor
Princeton, NJ 08540

Products & Services

Investments

- Bonds
- Stocks
- Mutual Funds
- Exchange Traded Funds
- Coverdell ESA
- Traditional IRA
- Roth IRA
- SEP IRA
- Simple IRA
- Brokerage Accounts
- Treasury Bills
- Government Securities
- Treasury Notes
- Variable Annuity

Financial Strategies

- Retirement Plans
- Tax Strategies
- 401(k) Planning
- 403(b) Planning
- College Planning
- Estate Planning
- Money Purchasing Plans
- Profit Sharing Plans
- Cash Flow and Budgeting

Insurance

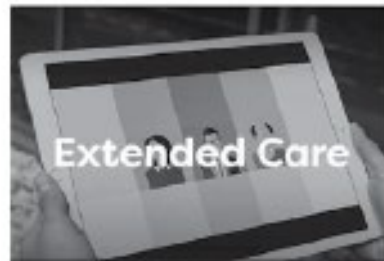
- Disability Income Insurance
- Life Insurance
- Long-Term-Care Insurance

Business Planning

- Exit Planning
- Succession Planning
- Executive Compensation Planning



Planning for the Expected
As We Age



Extended Care: A Patchwork of Possibilities



Planning for
Special Needs Children

Congratulations to JFS

Your contribution & dedication to the
community is an inspiration to all of us.

Keith Zimmerman &
Zimmerman Financial Group Inc.

We Make Senior Housing

SIMPLE.



**FREE
SERVICE**
for Seniors
& Their
Families

WHEN IT'S TIME TO CONSIDER senior housing, call us for personalized, professional help with finding exactly the right place.

OUR OASIS 5-STEP PROCESS

- 1 Your initial, no-obligation consultation
- 2 Identifying your lifestyle, healthcare needs and financial considerations
- 3 Finding ways to reduce your monthly costs
- 4 Developing a personalized list of local housing options
- 5 Touring the communities with you in order to find "the right place for you."

THE COMMUNITIES we'll look at may include:

- Assisted living
- Independent living
- Retirement communities
- Residential care homes
- Skilled nursing homes
- Memory care
- Respite services
- Hospice
- and more....

With our help, making this transition doesn't have to be stressful or confusing.



CONTACT your local
Oasis Senior Advisor now!

CONNIE PIZARRO, CSA
732.524.8864

CPizarro@YourOasisAdvisor.com
Somerset.OasisSeniorAdvisors.com



Because the **right place**
means everything



Parker

we make aging part of **life**®

We are committed to our mission of discovering ways to make aging manageable, relatable, and enriching for all.

Post-Acute Rehab
Nursing Care
Assisted Living
Memory Care
Adult Day Center
Health & Wellness Center



732-902-4200
www.Parkerlife.org

Piscataway | Highland Park | New Brunswick
Monroe Township | Somerset

**Thank you to JFS
for all you do for
the community!**

JERROLD TRUB AND TERI MANES
PARKVIEW CAPITAL MANAGEMENT





We Are One Community

Thank you to everyone who supported JFS during the past year.

While the pandemic has remained a challenge for all of us, we are truly grateful for our JFS friends and family who stepped up to support the thousands of people who came to JFS for help.

We are honored to stand with the JFS team working hard to empower those in need and to send a message of unity and respect for all. And we are humbled by the compassion and strength of our supporters, as well as those who have the courage to come to us for help.

With our sincere gratitude,

Roni and Jeff Salkin

Thank you to our special JFS
staff and volunteers,
for everything you do to
support our Jewish
Community, and especially
those remaining
Holocaust survivors.

A decorative background graphic consisting of several overlapping light gray circles and a series of vertical gray bars of varying heights, creating a textured, modern look.

Dov and Barbara Pollak



THE OSCAR AND ELLA WILF CAMPUS FOR SENIOR LIVING

STEIN ASSISTED LIVING
WILENTZ SENIOR RESIDENCE
STEIN HOSPICE
WILF TRANSPORT
THE FOUNDATION

*Providing the highest standards of quality service
and care, rooted in Jewish values and tradition*

*Celebrating Jewish Family Services
of Middlesex County's
continued service to the community*

(732)568-1155

www.wilfcampus.org

Somerset, NJ



SALIT AUTO SALES & REPAIR

SALES: 732-246-4811
REPAIRS: 732-543-2818

CENTRAL NEW JERSEY'S PREMIERE FAMILY OWNED AND OPERATED BUSINESS, SELLING EXCEPTIONAL PRE-OWNED (ONE OWNER) LOW MILEAGE VEHICLES SINCE 1995!

NOW FEATURING A FULL REPAIR SHOP ON PREMISES READY TO SERVICE YOUR VEHICLE, NO MATTER WHERE YOU BOUGHT YOUR CAR!



SEE OUR FULL INVENTORY ONLINE!

WWW.SALITAUTOSALES.COM



SALIT AUTO SALES

1855 Woodbridge Avenue • Edison, NJ 08817
732-246-4811 • info@salitautosales.com

featuring a FULL repair shop on premises,
no matter where you bought your car!

CENTRAL NEW JERSEY'S PREMIERE FAMILY OWNED AND OPERATED BUSINESS, SELLING EXCEPTIONAL PRE-OWNED (ONE OWNER) LOW MILEAGE VEHICLES SINCE 1995!

Good Credit.
Bad Credit.



No Problem!

LOW FINANCING RATES
AT SALIT AUTO SALES FOR
QUALIFIED CUSTOMERS

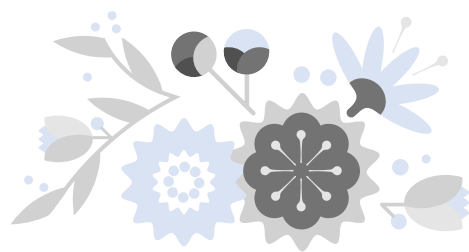


SEE OUR FULL INVENTORY ONLINE!

WWW.SALITAUTOSALES.COM



**Roni, we love you and
we're proud of you
for what you do every
day for the
community. Your
tireless efforts and
passion for helping
those in need
make a difference.**



JEAN, JOHN, ALLISON, AND CARLY

**Victory Subaru thanks
Jewish Family Services
for all their great work
in the community!**





Do Not Throw It Away

Junk Removal & Estate Cleanouts
Organizing & Staging

Do Not Throw It Away
Andrew Cerame
Owner

732-586-7525

Andrew@donotthrowitaway.com

www.donotthrowitaway.com

We are a full service junk removal and dumpster rental company.

Junk removal
Furniture removal
House and estate cleanout
Light demo
Decluttering
Organizing and staging
15 cubic yard dumpster rental

No job too big or small
Free price quote and consultation



TAKING THE STRESS OUT OF
YOUR CLEANOUT OR MOVE

DO NOT THROW IT AWAY

MoneyCare Financial, LLC

"Bringing order to your financial life"



Bernie Sokal
President

bernie@moneycarefinancial.com
www.moneycarefinancial.com



Providing services to clients in New Jersey and New York City

Who Benefits From Daily Money Management Services?

- Seniors and older adults
- Adult children responsible for managing an aging parent's affairs
- Widows, widowers, and divorcees
- People with disabilities
- High net worth individuals
- Individuals who lack time/skills for completing paperwork

Daily Money Management & Fiduciary Services

- Bill paying, including calls to payees regarding incorrect bills
- Preparation of checks for client signature
- Fiduciary Services – power of attorney and trustee services
- Reconciling checking, credit card accounts, and investment statements
- Negotiating with creditors and vendors
- Organizing tax and other financial documents
- Reviewing medical insurance claims to ensure proper processing
- Preparing spending budgets and plans to reduce debt

Want a free consultation?

Call today: **908.770.2695**

The Orchid



455 Main Street
Metuchen, NJ 08840
Tel: 732-321-9829
Fax: 732-321-1181



Eclectic Gourmet Glatt Kosher Restaurant & Caterer

Featuring Daily Fish, Chicken, Meat & Vegetarian Specialties

Eat In/Take Out

Gourmet Catering for all occasions

Under strict supervision of the Star-K



Netcentric IT Management

✉ info@netcentric-it.com

☎ 732.303.1444

🌐 www.netcentric-it.com

Business Continuity

Backup & Disaster Recovery
Managed Anti-Virus & Anti-Spam
Managed Network, Workstation &
Server Support
Onsite and Remote Support

Network Design & Implementation

Office Relocations & Construction Planning
Equipment Sales
Equipment Installations & Service

Cloud Services

Microsoft 365 Email, Teams,
SharePoint & OneDrive
Virtual Desktops & Servers
VOIP Telephone Services
Collaboration Solutions

Cybersecurity

Compliance Consulting
Cybersecurity Training
Security Operations Center (SOC)

Your business is your business. Keeping you in business is ours.



To All Our Cherished Community Partners—

You have my heartfelt gratitude for
your continued support of
Jewish Family Services.

Thank you for welcoming me into
your organizations and for
embracing the values of good will
and compassion that our agency
represents.

May our partnership endure for
many years as we reach out to the
most vulnerable among us
TOGETHER.

Judy Cavaliere





“I am grateful for being
able to sleep knowing
my husband is safe
and well cared for.

Thank you
for that gift.”

— Marcia S. —

Thank you, Marcia, for your kind words, and the kind words of so many families. The safety of our residents at the Hebrew Home at Riverdale is our highest priority. It's why we're testing all staff twice a week, we've instituted deep cleaning measures that meet the highest clinical standards, and we continue to reimagine our campus to make it safer than ever for all residents.

To learn more, go to riverspringhealth.org/safety

**LEADING
THE WAY
SAFELY**





"A single act of kindness throws out roots in all directions, and the roots spring up and make new trees." -Amelia Earhart

May JFS continue its compassionate mission of extending hope and healing to those in need throughout our community for many years to come.

.....

Steven and Sara Ullman and Family



Jewish Federation in the Heart of New Jersey

joins Jewish Family Services in its
commitment to make the Jewish community
more just, caring, and supportive.



Jewish Federation
IN THE HEART OF NEW JERSEY



We are proud to support JFS and the entire Jewish community in caring for those who are vulnerable and investing in a strong Jewish future.

230 Old Bridge Turnpike
South River, NJ 08882

p 732.588.1800
info@jewishheartnj.org

jewishheartnj.org



Thank you to JFS Staff
and Volunteers!

Your efforts make all
the difference.



Mike and Marion
Bernstein



**Commercial Printing • Digital Printing • Graphic Design
Print Management • Forms • Advertising Specialties
Public Relations • Copywriting • Direct Mail and Fulfillment**



**Web Design & Branding • Website Support
Search Engine Marketing • Analytics
Social Media • Advertising • Google Partner**

**7905 Browning Road, Suite 112
Pennsauken, NJ 08109
856-486-1700 • Fax 856-486-1545
www.creativeprintgroup.com
www.creativewebgroup.net**

**CREATIVE IS YOUR PREMIER CHOICE
FOR QUALITY, RELIABILITY AND SERVICE,
ALL AT COMPETITIVE PRICING.**

WWW.GOLDSTEINFUNERALCHAPEL.COM

***Serving the community with compassion
& care, at reasonable cost***

*I*n your time of need you can rely on **Goldstein's** to guide you through your darkest hour. You can find solace in knowing that we are independently Jewish owned, this means that our Jewish family, who is knowledgeable in your customs and traditions, is working for you.

**The Only
Jewish Owned & Operated
Chapel In The Tri Counties
Can others say the same?**

Consultation & estimates
without obligation

Funded pre-planned funerals
with guaranteed pricing



**BELKOFF
GOLDSTEIN
FUNERAL CHAPEL**

**Nesanel M. Rabenstein
DIRECTOR / NJ LIC #4621**

313 Second Street
Lakewood, NJ 08701

732.364.0900 • 800.487.2553

**WORLDWIDE
ARRANGEMENTS
AND SHIPPING**



**GOLDSTEIN
FUNERAL CHAPEL, INC.**

**Martin Goldstein
MANAGER / NJ LIC #4025**

2015 Woodbridge Ave
Edison, NJ 08817

732.777.0032 • 800.395.9266



www.BelkoffGoldsteinFuneralChapel.com

A decorative banner with several pennants in blue, red, and white with various patterns like polka dots and stripes.

**TO CHARLES CLARKSON
PROJECT DIRECTOR
SENIOR MEDICARE PATROL**

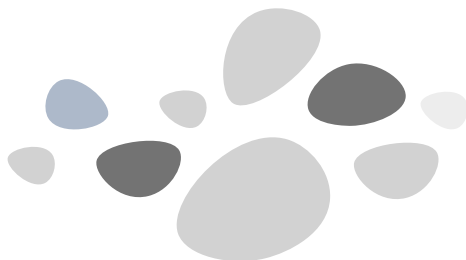
HAPPY
75TH
BIRTHDAY

**FROM RENA AND ALAN
STEINFELD**

A collection of small, rectangular confetti pieces in red, blue, and white scattered across the bottom of the card.

THANK YOU TO OUR
WONDERFUL STAFF
AND VOLUNTEERS
FOR ALL THAT YOU
DO TO HELP THOSE
IN NEED.

Vickie & Jeff
Solomon





239 Livingston Ave, New Brunswick, NJ 08901-1832
732-828-2332 • crabielFH@aol.com



Frank S. Facchini
Manager
NJ Lic. No 3217



Paulette Crabiel Wahler
Funeral Director
NJ Lic. No 3875



Lisa M. Lo Ricco Sharp
Funeral Director
NJ Lic. No 3710

David B. Crabiel, Founder
1920-2008

Serving the Community in a personalized, dignified and affordable manner



The Arc®

Middlesex County

About Us

For over 70 years, The Arc Middlesex County has continued to provide excellent support and services to a culturally diverse population of individuals with developmental and other disabilities as well as their families, ensuring personal growth and quality of life through empowerment and choice.

Why Choose Us?

- A Department of Children and Families Approved Provider Agency
- A Division of Developmental Disabilities Approved Provider Agency
- We operate licensed Group Homes
- We offer Supportive Living Apartments, Supported Employment Services, After-School Respite Programs, and Saturday Respite Programs
- We run individualized and customized programming as well as a Technology Center for individuals with disabilities
- Well Trained, Multi-Cultural Staff

Our Services Include:

- Day Habilitation
- Community Inclusion
- Prevocational Training
- Career Planning
- Individual Supports
- Residential Services
- Respite
- Family Support
- Support Coordination



For More information:



information@arc-middlesex.org



732-447-0315



www.arc-middlesex.org/



The Arc Middlesex County
219 Black Horse Lane, Suite 1
North Brunswick, NJ 08902



*Voted the Best
Jewish Funeral Home
in Central New Jersey*

BY THE READERS OF THE
HOME NEWS TRIBUNE



MICHAEL KULBACKI, MANAGER N.J. LIC. NO. 4870

Mount Sinai Memorial Chapels

454 CRANBURY ROAD
AT THE CORNER OF EVERGREEN BLVD
EAST BRUNSWICK, NJ 08816
(732) 390 9199
WWW.MSMC.US

-  Affordable and Flexible Services
-  Certified Pre-Planning Consultants
-  Chapel and Graveside Services
-  National & Worldwide Capabilities

Our heartfelt thanks and continued admiration to our staff, volunteers, and Board for their outstanding work during these very challenging times.

Sara and Michael Levine

Don't Make A Move Without Jon Kessler!
call/text 732-672-4699



Thank you,
Roni and Staff for
all your great work!

David Mosseri

To JFS Staff:
Your persistence in quietly
but effectively continuing
to provide valuable services
addressing the physical and
social-emotional gaps in the
lives of our many needy
community members is vital.

Thank you for your
flexibility and determination
in the midst of the pressures
of these troubling times.

SOL HECKELMAN



Call Us Today : 732-297-6444

1001 Finnigans Lane, North Brunswick, NJ 08902

*Innovators for what is new and exciting in cuisine
& service in the most elegant venues
in the Marlboro, Manalapan, Freehold
and East Brunswick area.*

Classical Caterers

Congregation B'nai Tikvah

Kosher and Glatt Kosher Catering

Welcome to a world of elegance and culinary delight!



GALAS

WEDDINGS

BAR MITZVAS

BAT MITZVAS

SPECIAL AFFAIRS



Senior Helpers Manalapan provides a full range of senior home care services for you or your loved one — from companionship and housework help to more complex care services, including disease management, Live-In and 24-hour care services.

Serving Monmouth and Middlesex Counties.

Senior Helpers Manalapan

Tony Szatkowski, Owner

732-242-7713

711 Tennent Road
Manalapan, NJ 07726



Your Partner for Success

Celebrating 30 years of Excellence!

At **BKC, CPAs, PC**, our experts will help you reach your business goals. We take the time to understand our clients' objectives and challenges, and provide a full range of services to support them in their journey to success.

- | | | |
|-----------------------------------|----------------------------|--------------------------------|
| • Audit & Assurance | • Governmental Entities | • Merger & Acquisitions |
| • Tax Planning & Compliance | • Estate Planning & Trusts | • Not-for-Profit Compliance |
| • Litigation Support & Valuations | • Small Business Services | • Employee Benefit Plan Audits |
| • Forensic Accounting | • Business Consulting | • Manufacturing & Distribution |

At **BKC Wealth Management, LLC**, our experienced advisors provide unbiased, tax smart investing strategies. We believe in thinking "out of the box" and we are not afraid to challenge conventional wisdom in our approach to investing and preserving wealth.

Contact us Today to Discuss Your
Financial Strategy!

■ **BKC Wealth Management, LLC**
www.bkcwealth.com

■ **BKC**
Certified Public Accountants, PC
www.bkc-cpa.com

39 State Route 12, Ste 2, Flemington, NJ 08822 ■ (908) 782-7900
34 East Avenue, Woodstown, NJ 08098 ■ (856) 769-0707 ■ info@bkc-cpa.com



*Ari, Rebecca, and
Kameron Solomon*

(732) 659-6898

**233 Route 18
East Brunswick, NJ
08816**



To JFS
For all you do during these
difficult times

Marcia and Mike Menaker



**Driscoll
FOODS**

FOR ALL YOUR FOODSERVICE NEEDS

**YEAR ROUND FRESH PRODUCE
FULL LINE OF DAIRY
FRESH SEAFOOD
USDA CUTSHOP ON PREMISE
FROZEN & DRY GROCERY
BEVERAGES
CLEANING SUPPLIES
EQUIPMENT & PAPER
& SO MUCH MORE!**

METRO NY
6 Westbelt
Wayne, NJ 07470
(973) 672-9400

CAPITAL REGION
105 Quist Road
Amsterdam, NY 12010
(518) 770-1900

VISIT WWW.DRISCOLLFOODS.COM FOR MORE INFORMATION

CONGRATULATIONS
JFS FOR ALL YOU DO
IN THE COMMUNITY.

EVIE HILL

M. DAVID

DeMarco
FUNERAL
HOME, INC.



Thomas J. DeMarco
NJ Lic. No. 4651
Manager

Peter S. Winther
NJ Lic. No. 4763
Director

Jennifer L. Burry
NJ Lic. No. 5172
Director

205 Rhode Hall Road
Monroe Twp., NJ 08831
(732) 521-0555
Family Owned and Operated
www.demarcofuneralhome.com
info@demarcofuneralhome.com

We wish to thank
Judy Cavaliere for
all that she does.

LAURA AND JAY
YUDOF

To my wonderful wife, *Judy Cavaliere*, I admire your hard work and dedication to *Jewish Family Services*, the people they serve, and the community.

WITH LOVE,
LOU CAVALIERE

Thank you,
Judy Cavaliere.
You're amazing!

Vickie & Jeff Solomon



*Chai
from
Sydney & Charles
Brandwein*

**Congratulations to
JFS!!
Celebrating 15 years
at JFS with a
wonderful,
hardworking staff**

Lisa Mason

Thank you for your continuous
support of the Women's Center
programs! With gratitude and
appreciation,

LISA BALEWITZ
Women's Center Coordinator



B&D DONOR RECOGNITION
HONOR THE GIFT. HONOR THE GIVER.

Donna Farley
(800) 873-3180

www.donorrecognitionproducts.com

**Congratulations to
JFS
Here's to continued
success!**

a n o n y m o u s



**KOSHER
CHINESE
EXPRESS**

kosherchinese88.com
(732) 866-1677
335 Route 9 South,
Manalapan, NJ

CENTURY 21.

Mack-Morris Iris Lurie Inc

47 Route 9 South • Morganville, NJ 07751



Marcia D. Sokal

Sales Associate

NJAR Circle of Excellence
NJAR Distinguished Sales Club

C: 908.334.3400

O: 732.536.2228 x3028

F: 732.536.1508

E: marcia.sokal@gmail.com



JCM

ASSOCIATES

Promotional Products
Commercial Printing
Signage

Kyle Chapman

✉ kyle.jcm@gmail.com

☎ 732.687.3185

T-Shirt George

✉ tshirtgeorge@gmail.com

☎ 732.882.2928

www.jcmlogo.com

Congratulations to the JFS Staff
for your dedication during these
difficult times.

BILL STOVER, LCSW

We'd like to thank Judy Cavaliere
and the others for the great
service they provide to the
Jewish community.

Ellen and Jim Walker



EXPLORE
Middlesex County
using NJTRANSIT

SCAN ME

Enjoy the arts, culture,
history, and everything
Middlesex County has
to offer. Get there by
riding NJTRANSIT

KMM Keep Middlesex Moving
MIDDLESEX COMMUTER CONNECTIONS

www.kmm.org
Paid for by NJTRANSIT

Russell D. Schwartz
D.D.S., P.A.

Dental Excellence in
Central New Jersey for over 25 years

Dental Hygiene
Implants
Cosmetic
Endodontics
Restorative
Pediatric
Periodontics
Oral Surgery

732-545-2883

rdsdentist@gmail.com

www.russellschwartzdds.com

201 Livingston Ave
New Brunswick, NJ 08901

Friendly Staff. Excellent Service. Beautiful Smiles.

NJ Electrical License 14236 Fire Alarm Permit P00597

Signal Electric Corp.

ELECTRICAL, FIRE ALARM, SECURITY, CCTV, INTERCOM, DATA.

Vadim Dernovoy, P.E.

Director of Operations

3005 Hadley Road, Unit #1
S. Plainfield, NJ, 07080

P: 732-333-3554

C: 609-891-8881

Vadim@SignalElectricNJ.com



EMKA Homecare.

732-635-2020
emkacares.com

Dedicated to Providing the Best In-Home Health Care. 505 Thornall St. Ste 201, Edison, NJ 08837



Providing You with Health Care at Home.

Live life your way in the comfort of your home with EMKA Home Care Services. From a few hours a week to 24/7 care, we'll tailor a personalized home care plan to fit your lifestyle with flexibility to change as your needs change.

Compassionate Caregivers You Can Count On

Rest assured, we hire only the best caregivers, whom we would trust with our own loved ones. Our caregivers are employees who are thoroughly screened and insured to ensure you and your loved ones are fully protected. They also participate in ongoing training and professional development opportunities.

Personal Care Services

EMKA Homecare provides full licensed and accredited personal care services to the patient at home:

- Bathing, Grooming and Hygiene
- Mobility Assistance
- Transferring and Positioning
- Occupational Therapy
- Toileting and Incontinence Care
- Feeding and Special Diet

In-Home Companionship

EMKA Homecare provides companionship and homemaking services at home:

- Conversation and Companionship
- Meal Preparation
- Light Housekeeping
- Grocery Shopping/Errands
- Incidental Transportation
- Medication Reminders

The More We Care, The More Beautiful Life Becomes

Personal Care | Mobility Assistance | Errands | Shopping | Light Housekeeping | Meal Preparation
Friendly Companionship | Flexible Hourly Care | Live-in Care | Bilingual | And More



Call our admissions team today to schedule a tour!

thegardensatmonroe.com 609.448.7036

THE *Gardens*

at Monroe

Healthcare and Rehabilitation



- Post-Hospital Nursing and Therapy
- Long-Term Care
- Respite Care

Post-Hospitalization Rehabilitation

Personalized, Goal-Oriented Treatment

Physical Therapy • Occupational Therapy

Speech Therapy • 24-Hour Nursing Staff

Certified Dietitian • Long-Term Care

Respite Care • Hospice & Palliative Care

Religious Services • Kosher Kitchen

Medicare, Medicaid and most insurances accepted

THE GARDENS AT MONROE 189 Applegarth Road • Monroe, NJ 08831